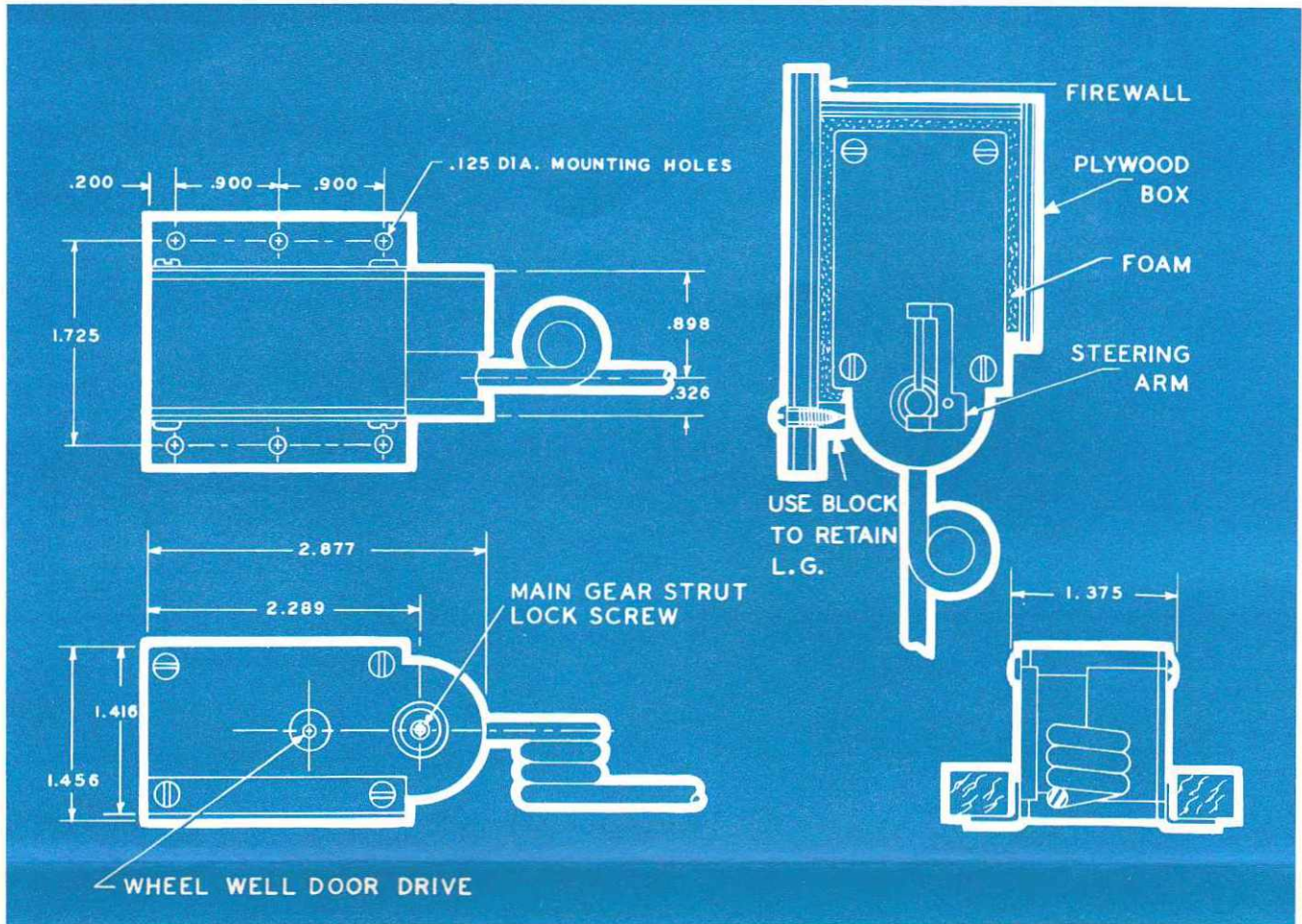


LANDING GEAR DIMENSIONS



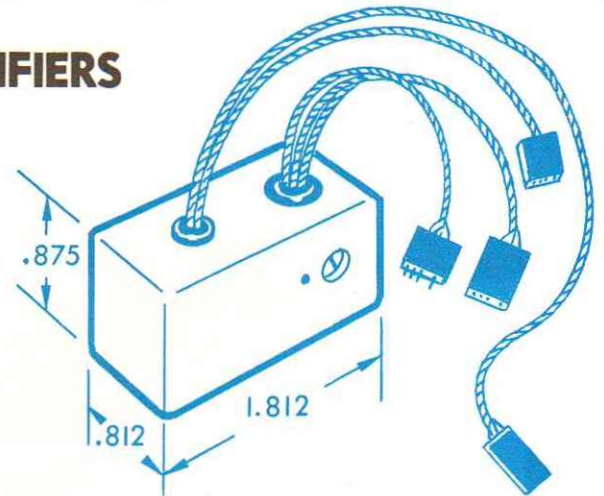
RETRACTABLE LANDING GEAR AMPLIFIERS

LG-47 — AMPLIFIER

This very compact, lightweight amplifier plugs into any auxiliary channel of a 1967 or later Kraft, PCS, or Heathkit radio system (with the exception of Heathkit's Model GD-405). By eliminating mechanical switching, it enhances reliability and simplifies installation.

LG-51 — AMPLIFIER FOR USE WITH FOUR CHANNEL RADIO SYSTEMS

This amplifier is physically similar and may be used interchangeably with the Model LG-47 but it has the additional capability of operating off of the throttle channel of any 1967 or later Kraft, PCS, or Heathkit radio by using throttle trim override. Gear retraction is obtained by placing the throttle control stick in the full open position and advancing the trim lever all the way. Conversely, gear extension is obtained by placing the throttle control stick in the full low position and retarding the throttle trim fully. Operation off of the throttle control channel is quite simple and full throttle control is retained.



ILLUSTRATED ABOVE — LG-51 AMPLIFIER. OUTSIDE DIMENSIONS ARE IDENTICAL FOR LG-47 AMPLIFIER.

NOTE:

Connectors supplied will mate with Kraft Series 70 or later radio unless ordered otherwise.